

ALL-in-one

Integrated Solar Street Light

Perfect combination of practical technology and optical art

The Art of designing for lightThe All in One Solar Street Light series is currently the latest lighting system.The All in One Solar Street Light series combines cutting-edge technology with efficient photovoltaic modules.



STRUCTURAL SUBJECT

The lamp body adopts integrated design

OPTICAL ELEMENT

The light source adopts bat wing lens optical accessories

ASSEMBLING METHOD

Sleeve angle adjustable installation mode

ALL-in-one

Integrated Solar Street Light

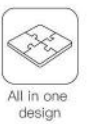
This is our latest lighting system, equipped with double-sided solar modules and powerful lighting, which can maximize the use of light energy. We combine cutting-edge technology with efficient photovoltaic modules, integrating powerful LiFePO4 batteries and intelligent controllers into a stylish and compact design. The sleeve is equipped with gears that can adjust the angle of the lamp body, achieving different lighting angles and improving product performance and efficiency. Meanwhile, integrated design simplifies installation and enhances user experience.



TX-30W

TX-40W

TX-50W



TX- 60W

TX- 80W

TX-100W

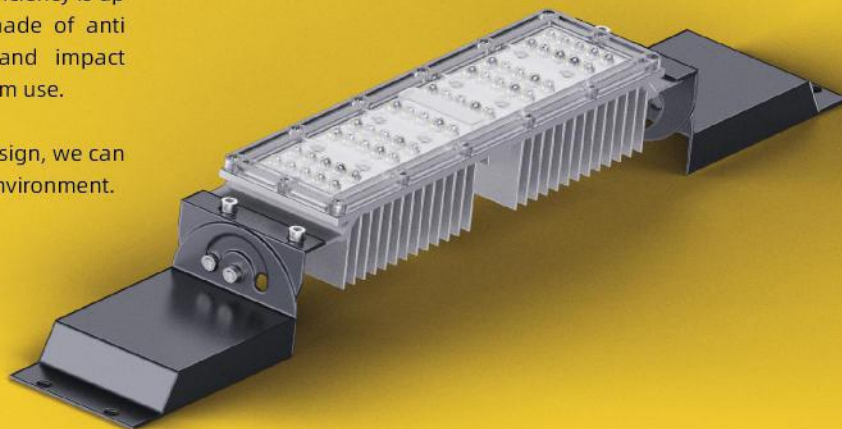
TECHNICAL PARAMETER

6-8H				
Power	Mono Solar Panel	Lithium Battery LifePO4	Lamp Size	Package Size
30W	60W	12.8V24AH	980*425*60mm	1090*515*200mm
40W	60W	12.8V24AH	980*425*60mm	1090*515*200mm
50W	70W	12.8V30AH	980*460*60mm	1090*550*200mm
60W	80W	12.8V30AH	940*510*60mm	1020*620*200mm
80W	110W	25.6V24AH	1340*510*60mm	1435*620*210mm
100W	120W	25.6V36AH	1380*510*60mm	1480*620*210mm
10H				
Power	Mono Solar Panel	Lithium Battery LifePO4	Lamp Size	Package Size
30W	70W	12.8V30AH	980*460*60mm	1090*550*200mm
40W	70W	12.8V30AH	980*460*60mm	1090*550*200mm
50W	80W	12.8V36AH	940*510*60mm	1020*620*200mm
60W	90W	12.8V36AH	1020*510*60mm	1120*620*200mm
80W	130W	25.6V36AH	1470*510*60mm	1570*620*210mm
100W	140W	25.6V36AH	1590*510*60mm	1690*620*210mm
12H				
Power	Mono Solar Panel	Lithium Battery LifePO4	Lamp Size	Package Size
30W	80W	12.8V36AH	940*510*60mm	1020*620*200mm
40W	80W	12.8V36AH	940*510*60mm	1020*620*200mm
50W	90W	12.8V42AH	1020*510*60mm	1120*620*200mm
60W	100W	12.8V42AH	1240*510*60mm	1340*620*210mm
80W	150W	25.6V36AH	1630*510*60mm	1730*620*210mm
100W	160W	25.6V48AH	1720*510*60mm	1820*620*210mm

HIGH EFFICIENCY LED

Using high-efficiency LED, the luminous efficiency is up to 180lm/W. The light sealing lens is made of anti ultraviolet PC, which has anti-aging and impact resistance performance, realizing long-term use.

Through the unique optical lens cut-off design, we can eliminate the pollution of lighting to the environment.



PROTECTION GRADE

•IP66



•IK08



IP66: the dust density completely prevents the foreign matter invasion, and may completely prevent the dust invasion, prevents the spray water invasion, prevents from all directions by the nozzle spray water enters the lamps and lanterns to cause the damage; IK08:10J Impact Force (equivalent to the impact of a 5KG object falling from a height of 200mm on a surface).

ADJUSTABLE ANGLE OF LAMP BODY

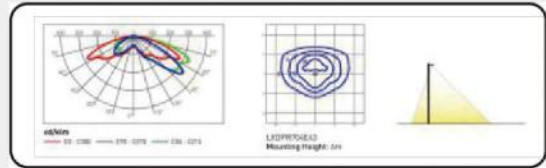
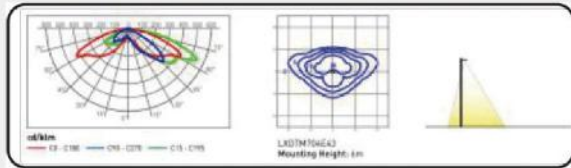


The integrated street lamp adopts a new angle adjustable fixed design, which is easy to install and maintain. The adjustment range is 0°~+60°, which can be adjusted according to environmental needs and is suitable for various installation environments.

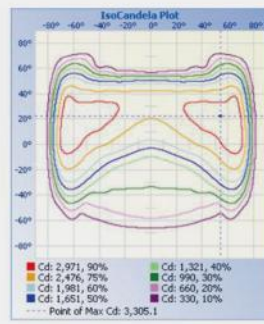
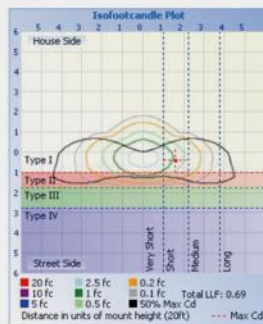
PHOTOMETRICS

Type 2 for street lighting, cycle paths and footpaths

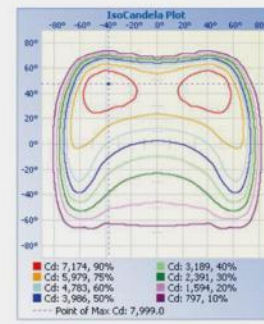
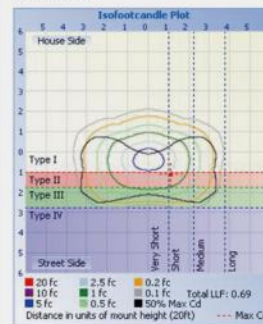
Type 3 for street light and car parks



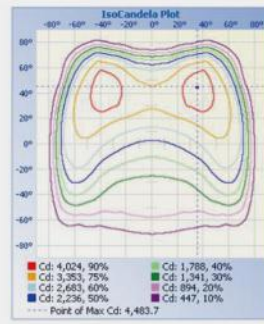
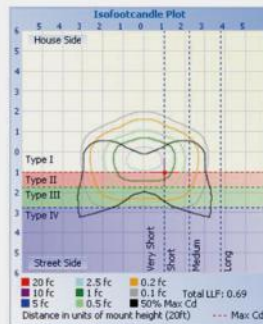
TYPE II (T203)



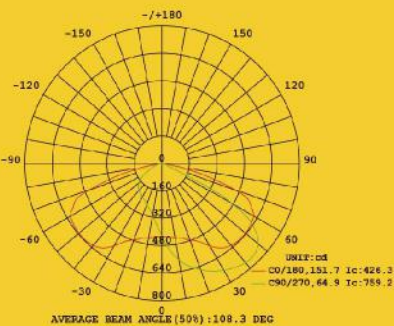
TYPE III (T304)



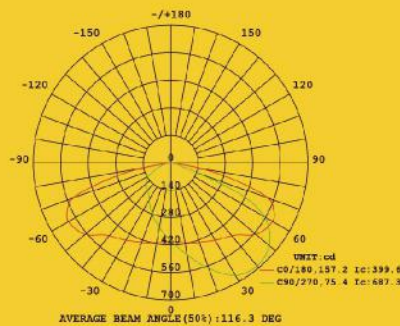
TYPE IV (T402)



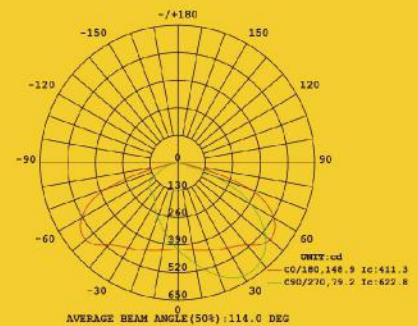
Type II



Type II



Type IV

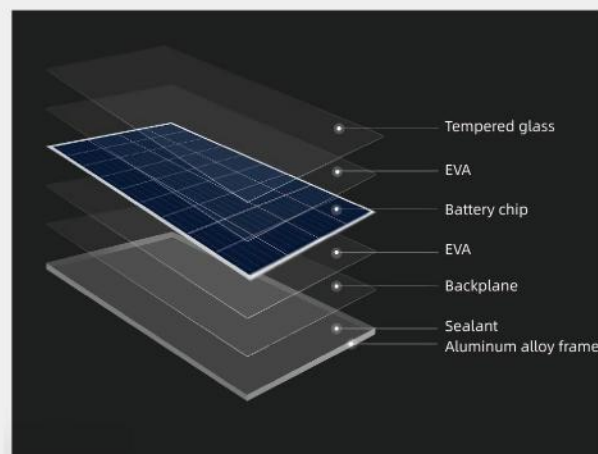


EFFICIENT SOLAR PANELS



The material selection is strict. After many tests and classification, qualified battery chips are selected, and special lamination process is adopted to ensure the adhesion strength between Eva and tempered glass and back plate.

The utility model has the advantages of good performance, long service life and high power generation efficiency.



LIFEPO4 BATTERY SYSTEM

Environment-friendly LiFePO4 batteries without metal components are used.

The cycle life is more than 1000 times, and it is safe to use without fire and explosion; High temperature resistance, large capacity, green environmental protection, non-toxic, pollution-free.



CHARGE LIGHTING POWER SUPPLY CONTROL SYSTEM

The charge and discharge efficiency of photovoltaic MPPT power supply controller is improved by adopting the circuit design of high-speed MOSFET pre-drive.

Intelligent power regulation, automatic weather judgment, reasonable discharge planning embedded in the microcomputer control system, charge and discharge a variety of intelligent control methods, make the whole system more efficient and energy-saving.

PRODUCT CHARACTERISTICS

1. Low-voltage self-activation of the battery to ensure that the battery-fed conditions of normal charging;
2. It can automatically adjust the output power according to the remaining capacity of the battery to extend the use time.
3. Constant voltage output to load can be set to normal/timing/optical control output mode;
4. With dormancy function, can effectively reduce their own losses;
5. Multi-protection function, timely and effective protection of products from damage, while the LED indicator to prompt;
6. Have real-time data, day data, historical data and other parameters to view;



INTELLIGENT POWER ADJUST

comes complete with built-in motion detection system that automatically regulate the light source from full bright to dim mode to increase battery autonomy.



YANGZHOU PHOEBUS OUTDOOR LIGHTING CO,LTD

ADD: No. 2, Leju Road, Smart Industrial Park, Songqiao New District, Gaoyou City, Jiangsu
MOB: +8613805254640
HTTP: www.phblighting.com
EMAIL: ben son@txlightinggroup.com
